

AP24 SERIES LUMINAIRE

U.11.14.18

AP24
HID

DESCRIPTION:

Lighting for exterior retail, commercial and hospitality environments. The AP24 Series consists of a decorative acorn combined with one of several styles of cast aluminum fitters.

INSTALLATION:

The luminaire will mount to a 3" OD post or tenon with 5/16" black oxide coated stainless steel set screws to ensure a solid connection. The diffuser will be held to the fitter by (4) 5/16"-18 black oxide coated stainless steel set screws.

ELECTRICAL:

- High power factor ballast (HPF), core and coil type, pre-wired and tested
- Easy ballast pod access
- 4KV pulse rated porcelain socket
- Suitable for wet location

ETL listed, suitable for wet locations.

DIFFUSER CHOICES:

- Clear Textured Polycarbonate (**PC-CL**)
- White Textured Polycarbonate (**PC-WH**)
- Clear Textured DR Acrylic (**DR-CL**)

FINISH:

Durable thermoset polyester powdercoat finish in the following:

- Satin Black (**BLK**)
- Classic Bronze (**CLB**)
- Gloss Textured Bronze (**GBZ**)
- Green (**GRN**)
- Gloss Textured Black (**GTB**)
- Textured Black (**TBK**)
- Gloss Textured Green (**TGR**)

ACCESSORIES:

- Cast aluminum Finial (**CFIN**)
- 90 Degree house-side shield (**HSS-90**)
- 180 Degree house-side shield (**HSS-180**)
- Dusk-to-dawn Photocell (**PCL**)

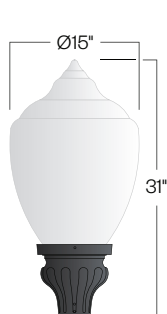


PROJECT:

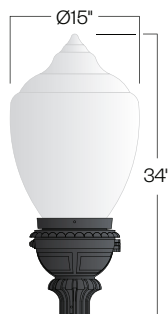
LOCATION:

FIXTURE TYPE:

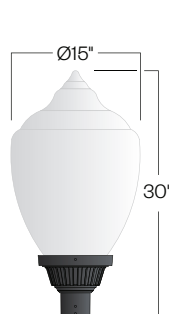
NOTES:



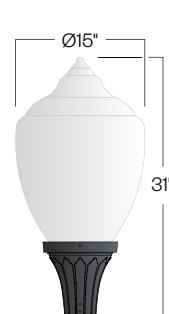
D131/AP24
EPA: 1.62



D134/AP24
EPA: 1.77



D135/AP24
EPA: 1.52



D136/AP24
EPA: 1.57



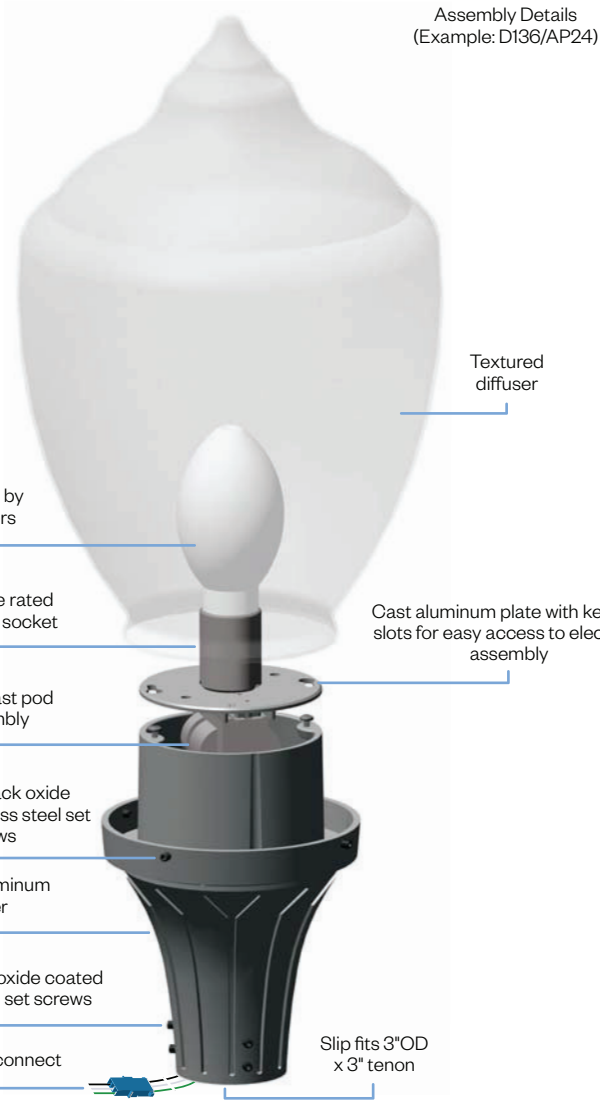
Ordering Information



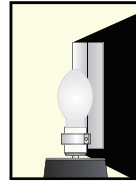
*Leave blank if not selected

Add additional accessories as needed.

- | | |
|---|---|
| <p>1 <u>Model</u>
 D131/AP24
 D134/AP24
 D135/AP24
 D136/AP24</p> <p>2 <u>Diffuser Material-Color</u>
 PC-CL - Clear Textured Polycarbonate
 PC-WH - White Textured Polycarbonate
 DR-CL - Clear Textured DR Acrylic</p> <p>3 <u>Optical Option (not required)</u>
 L3 - Type 3 Refractor
 L5 - Type 5 Refractor
 FDR - Faceted Downlight Reflector</p> <p>4 <u>Light Source</u>
 70MH - 70w Metal Halide
 100MH - 100w Metal Halide
 150MH - 150w Metal Halide
 70HPS - 70w High Pressure Sodium
 100HPS - 100w High Pressure Sodium
 150HPS - 150w High Pressure Sodium
 MDO - Medium Socket Only
 MGO - Mogul Socket Only</p> <p>5 <u>Voltage</u>
 120V
 208V
 240V
 277V</p> | <p>6 <u>Finish</u>
 BLK - Satin Black
 CLB - Classic Bronze
 GBZ - Gloss Textured Bronze
 GRN - Green
 GTB - Gloss Textured Black
 TBK - Textured Black
 TGR - Gloss Textured Green
 CSTM - Custom</p> <p>7 <u>Accessories</u>
 CFIN - Cast Aluminum Finial
 HSS-90 - 90° House Side Shield
 HSS-180 - 180° House Side Shield
 PCL - Dusk-to-dawn button type photocell</p> |
|---|---|



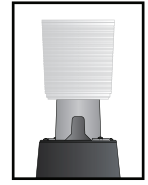
Options



HSS-90 & HSS-180
House Side Shield
for use with
Optical Systems

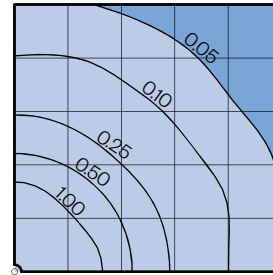


FDR
Faceted
Downlight
Reflector



L3 or L5
Type III or
Type V
Glass Refractor

Photometry



AP24 Assembly
Typical HID light source
14,000 Lumen
12' Mounting Height
Grid Spacing is 12'

Socket Types

Wattage	Socket Type
70MH, 100MH, 150MH	Medium
70HPS, 100HPS	Medium
150HPS	Mogul