

AR18GL SERIES UTILITY LUMINAIRE

U.10.17.18

AR18GL
HID UTILITY

DESCRIPTION:

Lighting for exterior retail, commercial and hospitality environments. The AR18GL Series consists of a Type III(T3) or Type V(T5) refractive borosilicate glass acorn combined with one of several styles of cast aluminum fitters.

INSTALLATION:

The luminaire will mount to a 3" OD post or tenon with 5/16" black oxide coated stainless steel set screws to ensure a solid connection. The diffuser will be held to the fitter by (4) 1/4-20" black oxide coated stainless steel captive set screws.

ELECTRICAL:

- High power factor ballast (HPF), core and coil type, pre-wired and tested
- Easy ballast pod access
- 4KV pulse rated porcelain socket
- Suitable for wet location

ETL listed, suitable for wet locations.

DIFFUSER:

- The fixture will have a high performance borosilicate glass refractive acorn.
- Specify Type III (T3) or Type V (T5) distribution.

FINISH:

Durable thermoset polyester powdercoat finish in the following:

- Satin Black (**BLK**)
- Classic Bronze (**CLB**)
- Gloss Textured Bronze (**GBZ**)
- Green (**GRN**)
- Gloss Textured Black (**GTB**)
- Textured Black (**TBK**)
- Gloss Textured Green (**TGR**)

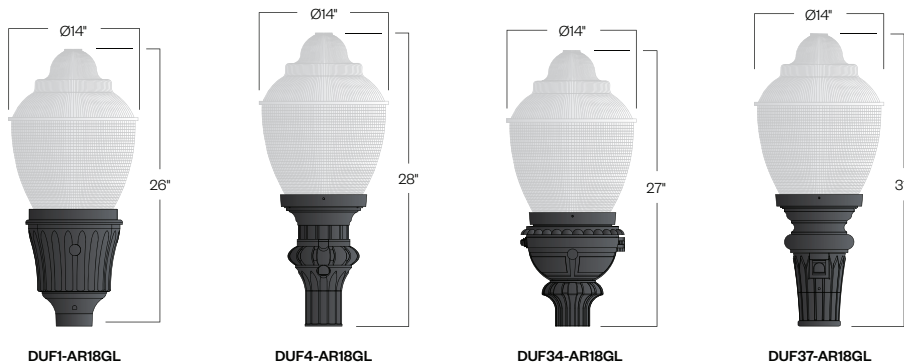
ACCESSORIES:

- Cast finial (**CFIN**)
- 90 degree house-side shield (**HSS-90**)
- 180 degree house-side shield (**HSS-180**)
- Twist-lock photocell (**PCL-TW**)
- Solid roof (**SR**)



PROJECT:

TYPE:



Ordering Information:

Model	Light Distribution	Light Source	Voltage	Finish	Accessories
DUF1-AR18GL DUF4-AR18GL DUF34-AR18GL DUF37-AR18GL	T3 T5	70MH 100MH 150MH 70HPS 100HPS 150HPS	120v 208v 240v 277v	BLK CLB GBZ GRN GTB TBK TGR Custom	CFIN FDR HSS-90 HSS-180 PCL-TW SR

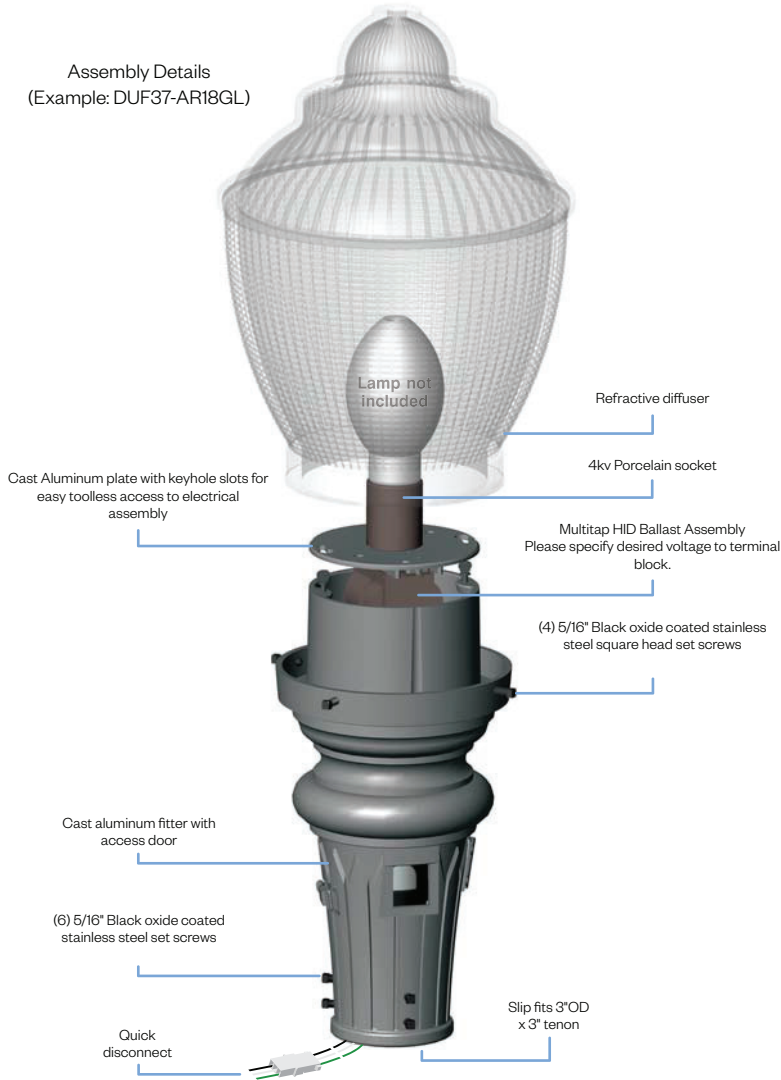
See next page for more complete ordering options



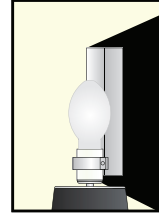
Part String

Example: DUF1-AR18GL-T5/100MH/120v/BLK

Assembly Details
(Example: DUF37-AR18GL)



Options



HSS90 & HSS180
House Side Shield
for use with Optical
Systems

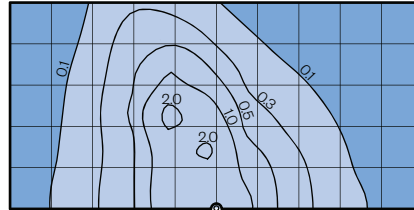


FDR
Façeted
Downlight
Reflector

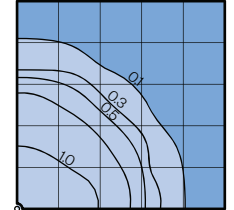
Photometry

AR18GL
Typical HID light source
14,000 Lumen
12' Mounting Height
Grid Spacing is 12'

Type III (T3)



Type V (T5)



Socket Types

Wattage	Socket Type
70MH,100MH,150MH	Medium
70HPS,100HPS	Medium
150HPS	Mogul

Accessories

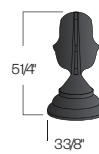


Shown with decorative ring and finial
(D138/AR18GL/R/FIN-08)

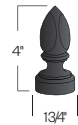


Shown with solid roof and finial
D138/AR18GL/SR/CFIN

Finial Styles



OFIN
(Cast aluminum)



FIN-08
Cast aluminum finial



FIN-760
Cast aluminum finial