

# AR18GL SERIES LUMINAIRE

U.11.15.18

AR18GL  
HID

## DESCRIPTION:

Lighting for exterior retail, commercial and hospitality environments.

The AR18GL Series consists of a Type III(T3) or Type V(T5) refractive borosilicate glass acorn combined with one of several styles of cast aluminum fitters.

## INSTALLATION:

The luminaire will mount to a 3" OD post or tenon with 5/16" black oxide coated stainless steel set screws to ensure a solid connection. The diffuser will be held to the fitter by (4) 5/16"-18 black oxide coated stainless steel set screws.

## ELECTRICAL:

- High power factor ballast (HPF), core and coil type, pre-wired and tested
- Easy ballast pod access
- 4KV pulse rated porcelain socket
- Suitable for wet location

**ETL listed, suitable for wet locations.**

## DIFFUSER:

- The fixture will have a high performance borosilicate glass refractive acorn.
- Specify Type III (**T3**) or Type V (**T5**) distribution.

## FINISH:

Durable thermoset polyester powdercoat finish in the following:

- Satin Black (**BLK**)
- Classic Bronze (**CLB**)
- Gloss Textured Bronze (**GBZ**)
- Green (**GRN**)
- Gloss Textured Black (**GTB**)
- Textured Black (**TBK**)
- Gloss Textured Green (**TGR**)

## ACCESSORIES:

- Cast aluminum Finial (**CFIN**)
- Faceted Downlight Reflector (**FDR**)
- 90 Degree house-side shield (**HSS-90**)
- 180 Degree house-side shield (**HSS-180**)
- Dusk-to-dawn Photocell (**PCL**)
- Solid roof (**SR**)
- Decorative Ring (**R**)



PROJECT:

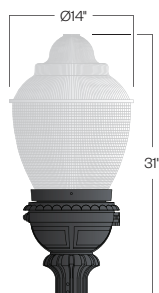
LOCATION:

FIXTURE TYPE:

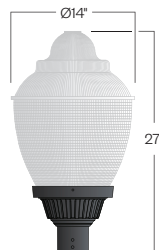
NOTES:



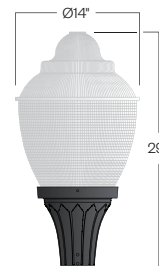
D131/AR18GL  
EPA: 129



D134/AR18GL  
EPA: 194



D135/AR18GL  
EPA: 171



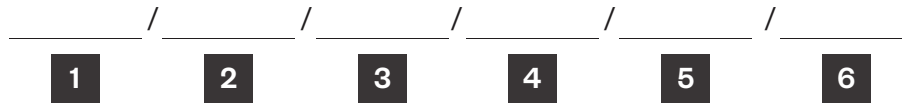
D136/AR18GL  
EPA: 176



# AR18GL SERIES LUMINAIRE

AR18GL  
HID

## Ordering Information



Add additional accessories as needed.

1

### Model

**D131/AR18GL**  
**D134/AR18GL**  
**D135/AR18GL**  
**D136/AR18GL**

2

### Lens Distribution

**T3** - Type 3  
**T5** - Type 5

3

### Light Source

**70MH** - 70w Metal Halide  
**100MH** - 100w Metal Halide  
**150MH** - 150w Metal Halide  
**70HPS** - 70w High Pressure Sodium  
**100HPS** - 100w High Pressure Sodium  
**150HPS** - 150w High Pressure Sodium  
**MDO** - Medium Socket Only  
**MGO** - Mogul Socket Only

4

### Voltage

**120V**  
**208V**  
**240V**  
**277V**

5

### Finish

**BLK** - Satin Black  
**CLB** - Classic Bronze  
**GBZ** - Gloss Textured Bronze  
**GRN** - Green  
**GTB** - Gloss Textured Black  
**TBK** - Textured Black  
**TGR** - Gloss Textured Green  
**CSTM** - Custom

6

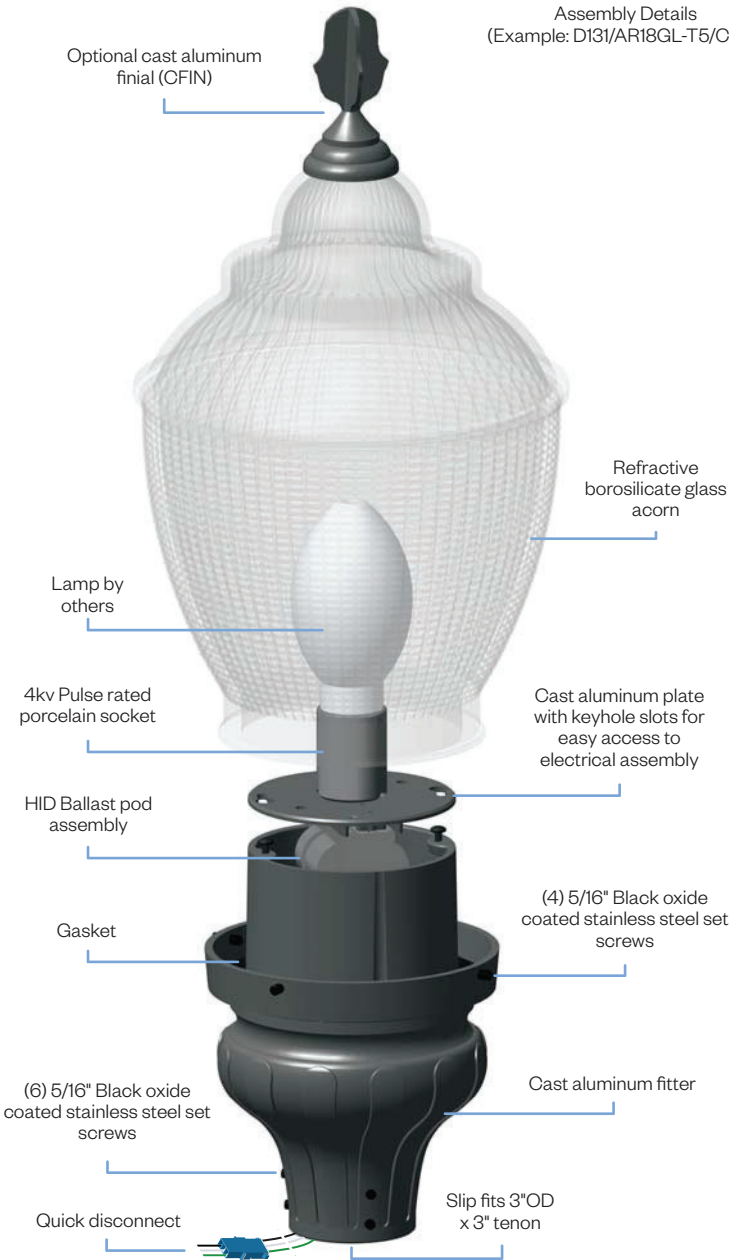
### Accessories

**CFIN** - Cast Aluminum Finial  
**HSS-90** - 90° House Side Shield  
**HSS-180** - 180° House Side Shield  
**PCL** - Dusk-to-dawn button type photocell  
**SR** - Solid Roof  
**R** - Decorative Ring

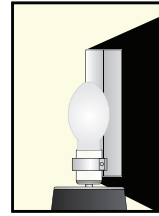
# AR18GL SERIES LUMINAIRE

AR18GL  
HID

## Assembly Details (Example: D131/AR18GL-T5/CFIN)



## Options



**HSS-90 & HSS-180**  
House Side Shield for use with Optical Systems

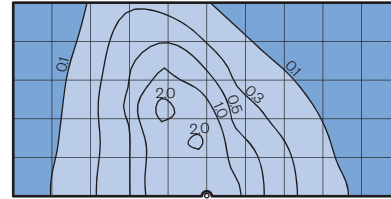


**FDR**  
Faceted Downlight Reflector

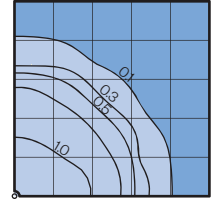
## Photometry

Typical HID light source  
14,000 Lumen  
12' Mounting Height  
Grid Spacing is 12'

Type III (T3)



Type V (T5)



## Socket Types

Wattage	Socket Type
<b>70MH,100MH,150MH</b>	Medium
<b>70HPS,100HPS</b>	Medium
<b>150HPS</b>	Mogul

## Accessories

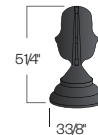


Shown with decorative ring and finial  
**(D138/AR18GL/R/FIN-08)**



Shown with solid roof and finial  
**D138/AR18GL/SR/CFIN**

## Finial Styles



CFIN  
(Cast aluminum)



FIN-760  
Cast aluminum finial