

AR20 SERIES HID LUMINAIRE

U.11.14.18

AR20
HID

DESCRIPTION:

Lighting for exterior retail, commercial and hospitality environments. The AR20 Series consists of a decorative acorn combined with one of several styles of cast aluminum fitters.

INSTALLATION:

The luminaire will mount to a 3" OD post or tenon with 5/16" black oxide coated stainless steel set screws to ensure a solid connection. The diffuser will be held to the fitter by (4) 5/16"-18 black oxide coated stainless steel set screws.

ELECTRICAL:

- High power factor ballast (HPF), core and coil type, pre-wired and tested
- Easy ballast pod access
- 4KV pulse rated porcelain socket
- Suitable for wet location

ETL listed, suitable for wet locations.

DIFFUSER CHOICES:

- Clear Textured Polycarbonate (**PC-CL**)
- Clear Textured DR Acrylic (**DR-CL**)

FINISH:

Durable thermoset polyester powdercoat finish in the following:

- Satin Black (**BLK**)
- Classic Bronze (**CLB**)
- Gloss Textured Bronze (**GBZ**)
- Green (**GRN**)
- Gloss Textured Black (**GTB**)
- Textured Black (**TBK**)
- Gloss Textured Green (**TGR**)

ACCESSORIES:

- Cast aluminum Finial (**CFIN**)
- 90 Degree house-side shield (**HSS-90**)
- 180 Degree house-side shield (**HSS-180**)
- Dusk-to-dawn Photocell (**PCL**)

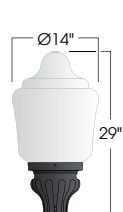


PROJECT:

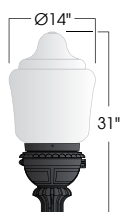
LOCATION:

FIXTURE TYPE:

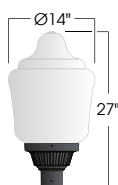
NOTES:



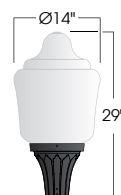
D131/AR20
EPA: 1.49



D134/AR20
EPA: 1.61



D135/AR20
EPA: 1.39



D136/AR20
EPA: 1.44



AR20 SERIES HID LUMINAIRE

AR20
HID

Ordering Information



*Leave blank if not selected

Add additional accessories as needed.

1

Model

D131/AR20
D134/AR20
D135/AR20
D136/AR20

2

Diffuser Material-Color

PC-CL - Clear Textured Polycarbonate
DR-CL - Clear Textured DR Acrylic

3

Optical Option (not required)

L3 - Type 3 Refractor
L5 - Type 5 Refractor
FDR - Faceted Downlight Reflector

4

Light Source

70MH - 70w Metal Halide
100MH - 100w Metal Halide
150MH - 150w Metal Halide
70HPS - 70w High Pressure Sodium
100HPS - 100w High Pressure Sodium
150HPS - 150w High Pressure Sodium
MDO - Medium Socket Only
MGO - Mogul Socket Only

5

Voltage

120V
208V
240V
277V

6

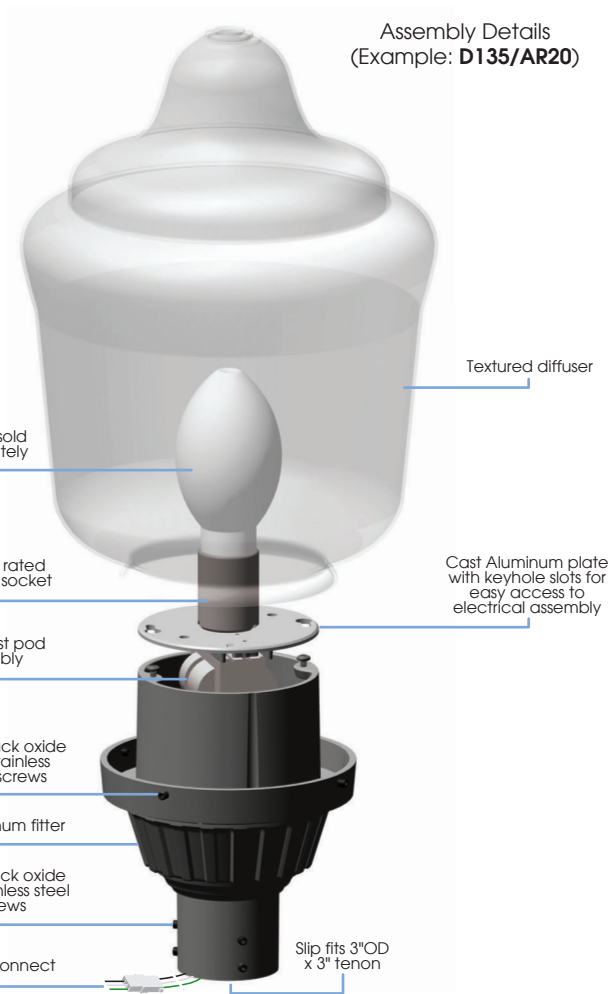
Finish

BLK - Satin Black
CLB - Classic Bronze
GBZ - Gloss Textured Bronze
GRN - Green
GTB - Gloss Textured Black
TBK - Textured Black
TGR - Gloss Textured Green
CSTM - Custom

7

Accessories

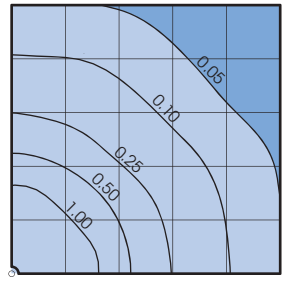
CFIN - Cast Aluminum Finial
HSS-90 - 90° House Side Shield
HSS-180 - 180° House Side Shield
PCL - Dusk-to-dawn button type photocell



Options

HSS House Side Shield for use with Optical Systems	FDR Faceted Downlight Reflector	LVR 4 Tier Anodized Aluminum Louver	L3 or L5 Type III or Type V Glass Refractor

Photometry



Typical HID light source
14,000 Lumen
12' Mounting Height
Grid Spacing is 12'

Socket Types

Wattage	Socket Type
50MH, 70MH, 100MH, 150MH	Medium
175MH-PS, 250MH-PS	Mogul
50HPS, 70HPS, 100HPS	Medium
150HPS, 250HPS	Mogul