

# AR20 SERIES HID LUMINAIRE

U.8.14.19

AR20  
HID

## DESCRIPTION:

Lighting for exterior retail, commercial and hospitality environments. The AR20 Series consists of a decorative acorn combined with one of several styles of cast aluminum fitters.

## INSTALLATION:

The luminaire will mount to a 3" OD post or tenon with 5/16" black oxide coated stainless steel set screws to ensure a solid connection. The diffuser will be held to the fitter by (4) 5/16"-18 black oxide coated stainless steel set screws.

## ELECTRICAL:

- High power factor ballast (HPF), core and coil type, pre-wired and tested
- Easy ballast pod access
- 4KV pulse rated porcelain socket
- Suitable for wet location

**ETL listed, suitable for wet locations.**

## DIFFUSER CHOICES:

- Clear Textured Polycarbonate (**PC-CL**)
- Clear Textured DR Acrylic (**DR-CL**)

## FINISH:

Durable thermoset polyester powdercoat finish in the following:

- Satin Black (**BLK**)
- Classic Bronze (**CLB**)
- Gloss Textured Bronze (**GBZ**)
- Green (**GRN**)
- Gloss Textured Black (**GTB**)
- Textured Black (**TBK**)
- Gloss Textured Green (**TGR**)

## ACCESSORIES:

- Cast aluminum Finial (**CFIN**)
- 90 Degree house-side shield (**HSS-90**)
- 180 Degree house-side shield (**HSS-180**)
- Dusk-to-dawn Photocell (**PCL**)

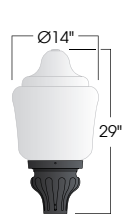


PROJECT:

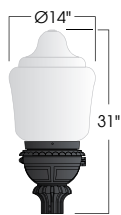
LOCATION:

FIXTURE TYPE:

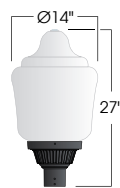
NOTES:



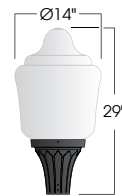
**D131/AR20**  
EPA: 1.49



**D134/AR20**  
EPA: 1.61



**D135/AR20**  
EPA: 1.39



**D136/AR20**  
EPA: 1.44



# AR20 SERIES HID LUMINAIRE

AR20  
HID

## Ordering Information



\*Leave blank if not selected

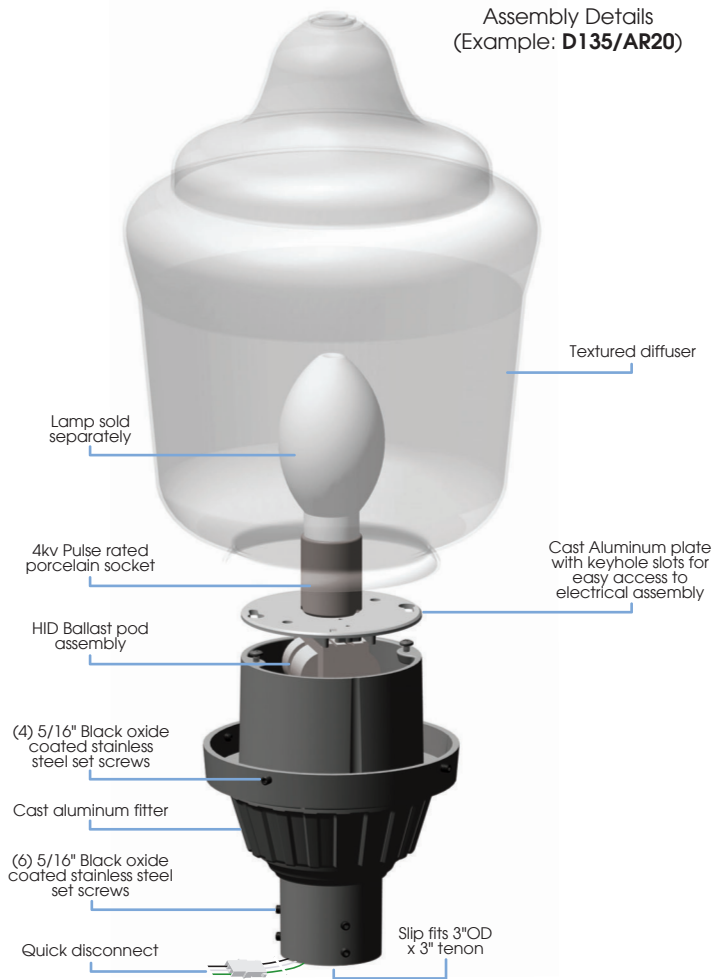
Add additional accessories as needed.

- |  |  |
|--|--|
| <b>1</b> <u>Model</u><br><b>D131/AR20</b><br><b>D134/AR20</b><br><b>D135/AR20</b><br><b>D136/AR20</b>  | <b>6</b> <u>Finish</u><br><b>BLK</b> - Satin Black<br><b>CLB</b> - Classic Bronze<br><b>GBZ</b> - Gloss Textured Bronze<br><b>GRN</b> - Green<br><b>GTB</b> - Gloss Textured Black<br><b>TBK</b> - Textured Black<br><b>TGR</b> - Gloss Textured Green<br><b>CSTM</b> - Custom |
| <b>2</b> <u>Diffuser Material-Color</u><br><b>PC-CL</b> - Clear Textured Polycarbonate<br><b>DR-CL</b> - Clear Textured DR Acrylic   | <b>7</b> <u>Accessories</u><br><b>CFIN</b> - Cast Aluminum Finial<br><b>HSS-90</b> - 90° House Side Shield<br><b>HSS-180</b> - 180° House Side Shield<br><b>PCL</b> - Dusk-to-dawn button type photocell   |
| <b>3</b> <u>Optical Option (not required)</u><br><b>L3</b> - Type 3 Refractor<br><b>L5</b> - Type 5 Refractor<br><b>FDR</b> - Faoceted Downlight Reflector   |  |
| <b>4</b> <u>Light Source</u><br><b>70MH</b> - 70w Metal Halide<br><b>100MH</b> - 100w Metal Halide<br><b>150MH</b> - 150w Metal Halide<br><b>70HPS</b> - 70w High Pressure Sodium<br><b>100HPS</b> - 100w High Pressure Sodium<br><b>150HPS</b> - 150w High Pressure Sodium<br><b>MDO</b> - Medium Socket Only<br><b>MGO</b> - Mogul Socket Only |  |
| <b>5</b> <u>Voltage</u><br><b>120V</b><br><b>208V</b><br><b>240V</b><br><b>277V</b>  |  |

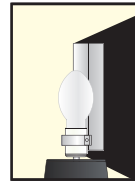
# AR20 SERIES HID LUMINAIRE

AR20  
HID

Assembly Details  
(Example: D135/AR20)



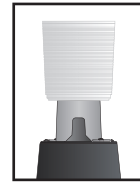
## Options



**HSS**  
House Side  
Shield for use  
with Optical  
Systems

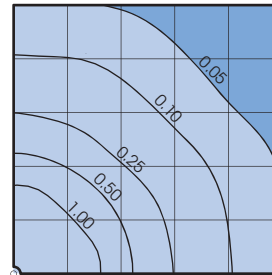


**FDR**  
Faceted  
Downlight  
Reflector



**L3 or L5**  
Type III or  
Type V  
Glass Refractor

## Photometry



Typical HID light source  
14,000 Lumen  
12' Mounting Height  
Grid Spacing is 12'

## Socket Types

Wattage	Socket Type
50MH, 70MH, 100MH, 150MH	Medium
175MH-PS, 250MH-PS	Mogul
50HPS, 70HPS, 100HPS	Medium
150HPS, 250HPS	Mogul