

AR20 SERIES HID LUMINAIRE

U.8.14.19

AR20
HID

DESCRIPTION:

Lighting for exterior retail, commercial and hospitality environments. The AR20 Series consists of a decorative acorn combined with one of several styles of cast aluminum fitters.

INSTALLATION:

The luminaire will mount to a 3" OD post or tenon with 5/16" black oxide coated stainless steel set screws to ensure a solid connection. The diffuser will be held to the fitter by (4) 5/16"-18 black oxide coated stainless steel set screws.

ELECTRICAL:

- High power factor ballast (HPF), core and coil type, pre-wired and tested
- Easy ballast pod access
- 4KV pulse rated porcelain socket
- Suitable for wet location

ETL listed, suitable for wet locations.

DIFFUSER CHOICES:

- Clear Textured Polycarbonate (**PC-CL**)
- Clear Textured DR Acrylic (**DR-CL**)

FINISH:

Durable thermoset polyester powdercoat finish in the following:

- Satin Black (**BLK**)
- Classic Bronze (**CLB**)
- Gloss Textured Bronze (**GBZ**)
- Green (**GRN**)
- Gloss Textured Black (**GTB**)
- Textured Black (**TBK**)
- Gloss Textured Green (**TGR**)

ACCESSORIES:

- Cast aluminum Finial (**CFIN**)
- 90 Degree house-side shield (**HSS-90**)
- 180 Degree house-side shield (**HSS-180**)
- Dusk-to-dawn Photocell (**PCL**)

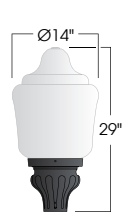


PROJECT:

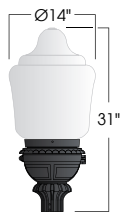
LOCATION:

FIXTURE TYPE:

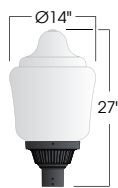
NOTES:



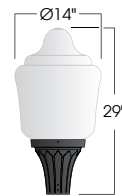
D131/AR20
EPA: 1.49



D134/AR20
EPA: 1.61



D135/AR20
EPA: 1.39



D136/AR20
EPA: 1.44



AR20 SERIES HID LUMINAIRE

AR20
HID

Ordering Information



*Leave blank if not selected

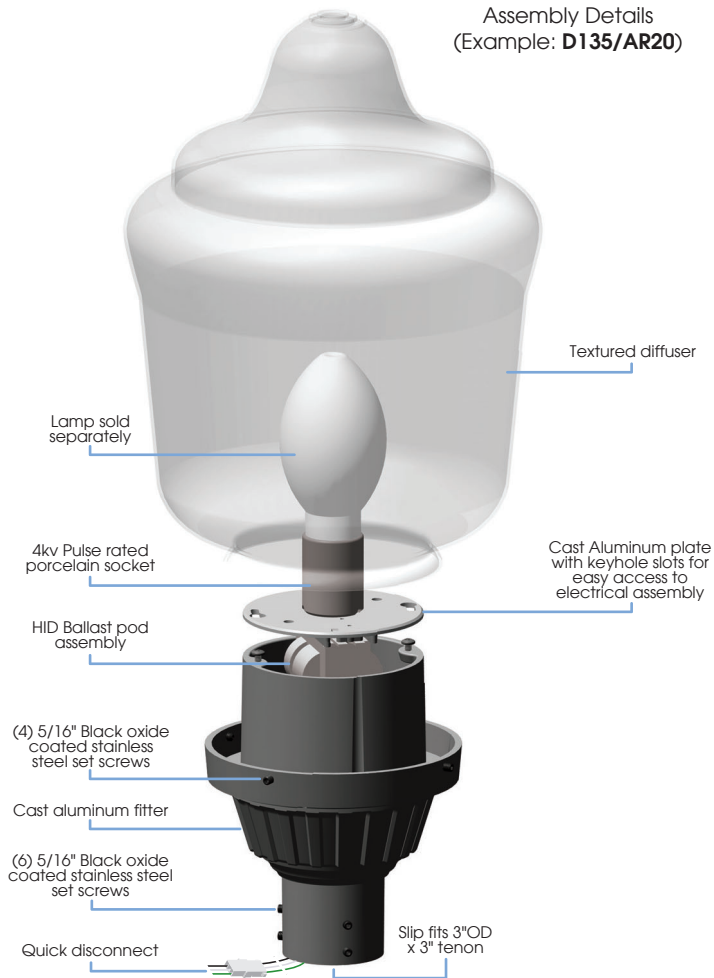
Add additional accessories as needed.

- | | |
|--|---|
| <p>1 <u>Model</u>
D131/AR20
D134/AR20
D135/AR20
D136/AR20</p> <p>2 <u>Diffuser Material-Color</u>
PC-CL - Clear Textured Polycarbonate
DR-CL - Clear Textured DR Acrylic</p> <p>3 <u>Optical Option (not required)</u>
L3 - Type 3 Refractor
L5 - Type 5 Refractor
FDR - Faeted Downlight Reflector</p> <p>4 <u>Light Source</u>
70MH - 70w Metal Halide
100MH - 100w Metal Halide
150MH - 150w Metal Halide
70HPS - 70w High Pressure Sodium
100HPS - 100w High Pressure Sodium
150HPS - 150w High Pressure Sodium
MDO - Medium Socket Only
MGO - Mogul Socket Only</p> <p>5 <u>Voltage</u>
120V
208V
240V
277V</p> | <p>6 <u>Finish</u>
BLK - Satin Black
CLB - Classic Bronze
GBZ - Gloss Textured Bronze
GRN - Green
GTB - Gloss Textured Black
TBK - Textured Black
TGR - Gloss Textured Green
CSTM - Custom</p> <p>7 <u>Accessories</u>
CFIN - Cast Aluminum Finial
HSS-90 - 90° House Side Shield
HSS-180 - 180° House Side Shield
PCL - Dusk-to-dawn button type photocell</p> |
|--|---|

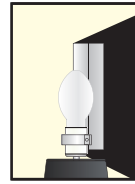
AR20 SERIES HID LUMINAIRE

AR20
HID

Assembly Details (Example: D135/AR20)



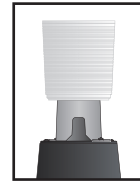
Options



HSS
House Side
Shield for use
with Optical
Systems

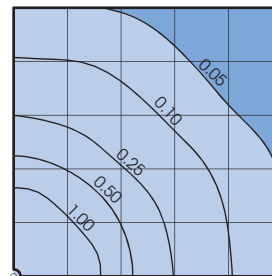


FDR
Faceted
Downlight
Reflector



L3 or L5
Type III or
Type V
Glass Refractor

Photometry



Typical HID light source
14,000 Lumen
12' Mounting Height
Grid Spacing is 12'

Socket Types

Wattage	Socket Type
50MH, 70MH, 100MH, 150MH	Medium
175MH-PS, 250MH-PS	Mogul
50HPS, 70HPS, 100HPS	Medium
150HPS, 250HPS	Mogul