

ASR26 SERIES LUMINAIRE

U.11.15.18

DESCRIPTION:

Lighting for exterior retail, commercial and hospitality environments. The ASR26 Series consists of a high performance luminaire designed around an efficient Type III (T3) or Type V (T5) refractive acorn combined with one of several styles of cast aluminum fitters.

INSTALLATION:

The luminaire will mount to a 3" OD post or tenon with 5/16" black oxide coated stainless steel set screws to ensure a solid connection. The diffuser will be held to the fitter by (4) 5/16"-18 black oxide coated stainless steel set screws.

ELECTRICAL:

- High power factor ballast (HPF), core and coil type, pre-wired and tested
- Easy ballast pod access
- 4KV pulse rated porcelain socket
- Suitable for wet location

ETL listed, suitable for wet locations.

DIFFUSER CHOICES:

- Acrylic Type III (**AC-T3**)
- Acrylic Type V (**AC-T5**)
- Polycarbonate Type III (**PC-T3**)
- Polycarbonate Type V (**PC-T5**)

FINISH:

Durable thermoset polyester powdercoat finish in the following:

- Satin Black (**BLK**)
- Classic Bronze (**CLB**)
- Gloss Textured Bronze (**GBZ**)
- Green (**GRN**)
- Gloss Textured Black (**GTB**)
- Textured Black (**TBK**)
- Gloss Textured Green (**TGR**)

ACCESSORIES:

- Cast aluminum Finial (**CFIN**)
- Faceted Downlight Reflector (**FDR**)
- 90 Degree house-side shield (**HSS-90**)
- 180 Degree house-side shield (**HSS-180**)
- Dusk-to-dawn Photocell (**PCL**)

ASR26
HID



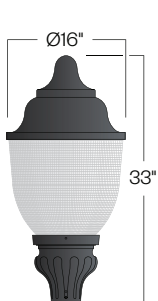
Shown with optional CFIN

PROJECT:

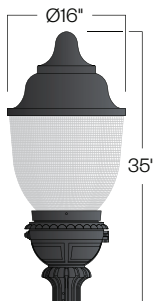
LOCATION:

FIXTURE TYPE:

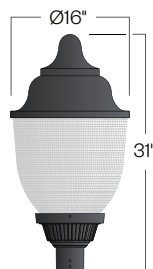
NOTES:



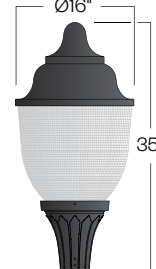
D131/ASR26
EPA: 1.80



D134/ASR26
EPA: 1.93



D135/ASR26
EPA: 1.70



D136/ASR26
EPA: 1.75



Ordering Information



Add additional accessories as needed.

1

Model

D131/ASR26
D134/ASR26
D135/ASR26
D136/ASR26

2

Diffuser Choices

AC-T3- Acrylic Type 3
AC-T5- Acrylic Type 5
PC-T3- Polycarbonate Type 3
PC-T5- Polycarbonate Type 5

3

Light Source

70MH - 70w Metal Halide
100MH - 100w Metal Halide
150MH - 150w Metal Halide
70HPS - 70w High Pressure Sodium
100HPS - 100w High Pressure Sodium
150HPS - 150w High Pressure Sodium
MDO - Medium Socket Only
MGO - Mogul Socket Only

4

Voltage

120V
208V
240V
277V

5

Finish

BLK - Satin Black
CLB - Classic Bronze
GBZ - Gloss Textured Bronze
GRN - Green
GTB - Gloss Textured Black
TBK - Textured Black
TGR - Gloss Textured Green
CSTM - Custom

6

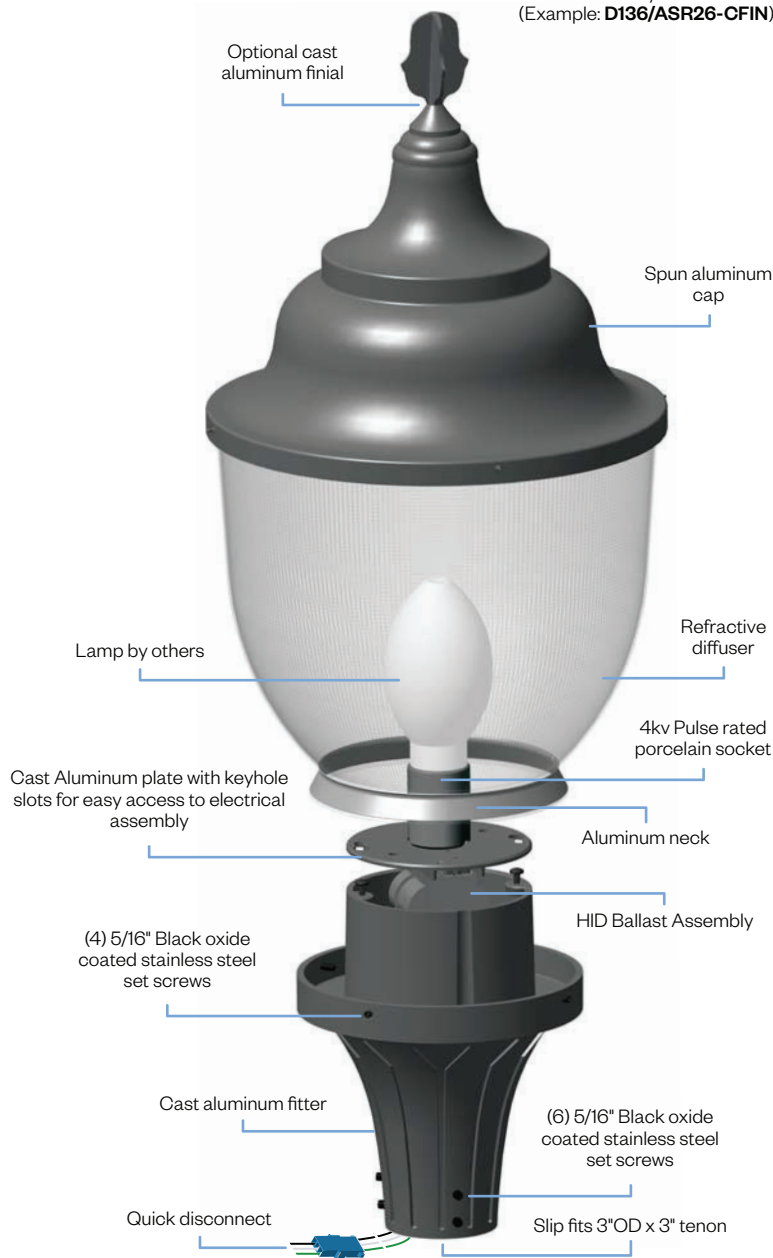
Accessories

CFIN - Cast Aluminum Finial
HSS-90 - 90° House Side Shield
HSS-180 - 180° House Side Shield
PCL - Dusk-to-dawn button type photocell

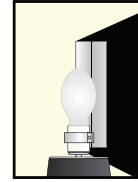
ASR26 SERIES LUMINAIRE

ASR26
HID

Assembly Details (Example: D136/ASR26-CFIN)



Options

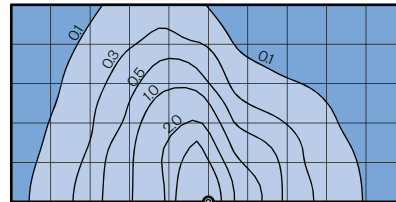


HSS90 & HSS180
House Side Shield
for use with Optical
Systems

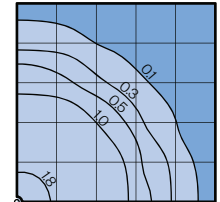
Standard Photometry

Typical HID light source
14,000 Lumen
12' Mounting Height
Grid Spacing is 12'

Type III (T3)



Type V (T5)



Socket Types

Wattage	Socket Type
70MH,100MH,150MH	Medium
70HPS,100HPS	Medium
150HPS	Mogul