

CG SERIES LUMINAIRE

U.11.16.18

CG Series
HID

DESCRIPTION:

Lighting for exterior retail, commercial and hospitality environments. The CG Series consists of a decorative caged acorn and finial combined with one of several styles of cast aluminum fitters.

INSTALLATION:

The luminaire will mount to a 3" OD post or tenon with 5/16" black oxide coated stainless steel set screws to ensure a solid connection. The diffuser will be held to the fitter by (4) 5/16"-18 black oxide coated stainless steel set screws.

ELECTRICAL:

- High power factor ballast (HPF), core and coil type, pre-wired and tested
- Easy ballast pod access
- 4KV pulse rated porcelain socket
- Suitable for wet location

ETL listed, suitable for wet locations.

DIFFUSER CHOICES:

- Clear Textured Polycarbonate (**PC-CL**)
- White Textured Polycarbonate (**PC-WH**)
- Clear Textured DR Acrylic (**DR-CL**)

FINISH:

Durable thermoset polyester powdercoat finish in the following:

- Satin Black (**BLK**)
- Classic Bronze (**CLB**)
- Gloss Textured Bronze (**GBZ**)
- Green (**GRN**)
- Gloss Textured Black (**GTB**)
- Textured Black (**TBK**)
- Gloss Textured Green (**TGR**)

ACCESSORIES:

- Faceted Downlight Reflector (**FDR**)
- 90 Degree house-side shield (**HSS-90**)
- 180 Degree house-side shield (**HSS-180**)
- Dusk-to-dawn Photocell (**PCL**)

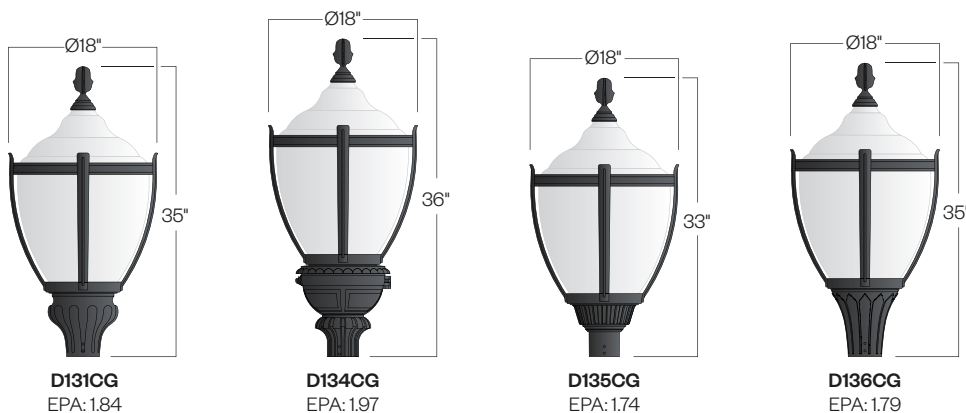


PROJECT:

LOCATION:

FIXTURE TYPE:

NOTES:



Ordering Information



*Leave blank if not selected

Add additional accessories as needed.

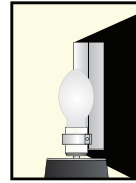
- | | |
|---|---|
| <p>1 <u>Model</u>
 D131CG
 D134CG
 D135CG
 D136CG</p> <p>2 <u>Diffuser Material-Color</u>
 PC-CL - Clear Textured Polycarbonate
 PC-WH - White Textured Polycarbonate
 DR-CL - Clear Textured DR Acrylic</p> <p>3 <u>Optical Option (not required)</u>
 L3 - Type 3 Refractor
 L5 - Type 5 Refractor
 FDR - Faceted Downlight Reflector</p> <p>4 <u>Light Source</u>
 70MH - 70w Metal Halide
 100MH - 100w Metal Halide
 150MH - 150w Metal Halide
 70HPS - 70w High Pressure Sodium
 100HPS - 100w High Pressure Sodium
 150HPS - 150w High Pressure Sodium
 MDO - Medium Socket Only
 MGO - Mogul Socket Only</p> <p>5 <u>Voltage</u>
 120V
 208V
 240V
 277V</p> | <p>6 <u>Finish</u>
 BLK - Satin Black
 CLB - Classic Bronze
 GBZ - Gloss Textured Bronze
 GRN - Green
 GTB - Gloss Textured Black
 TBK - Textured Black
 TGR - Gloss Textured Green
 CSTM - Custom</p> <p>7 <u>Accessories</u>
 HSS-90 - 90° House Side Shield
 HSS-180 - 180° House Side Shield
 PCL - Dusk-to-dawn button type photocell</p> |
|---|---|

CG SERIES LUMINAIRE

CG Series
HID



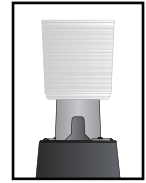
Options



HSS-90 & HSS-180
House Side Shield
for use with Optical
Systems

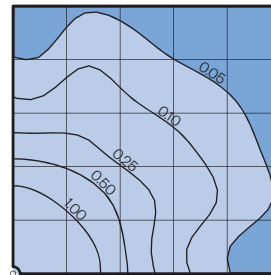


FDR
Faceted
Downlight
Reflector



L3 or L5
Type III or
Type V
Glass Refractor

Photometry



Typical HID light source
14,000 Lumen
12' Mounting Height
Grid Spacing is 12'

Socket Types

Wattage	Socket Type
70MH, 100MH, 150MH	Medium
70HPS, 100HPS	Medium
150HPS	Mogul