

# D730ARP HID SERIES LUMINAIRE

U.8.15.19

## Description

The D730ARP Series is a high performance luminaire designed around an efficient Type III (T3) or Type V (T5) refractive lens surrounded by a decorative cage with a choice of cast aluminum fitters. An available perforated light reflector can help minimize light to the upper hemisphere.

## Electrical

- High power factor ballast (HPF), core and coil type, pre-wired and tested
- Easy ballast pod access
- 4KV pulse rated porcelain socket
- Suitable for wet location

**ETL listed, suitable for wet locations.**

## Installation

The luminaire will mount to a 3" OD post or tenon with 5/16" black oxide coated stainless steel set screws to ensure a solid connection. The diffuser will be held to the fitter by (4) 5/16" black oxide coated stainless steel captive set screws.

## Diffuser choices

- Acrylic Type III (AC-T3)
- Polycarbonate Type III (PC-T3)
- Acrylic Type V (AC-T5)
- Polycarbonate Type V (PC-T5)

## Finish

Premium quality thermoset polyester powdercoat for a durable finish in the following:

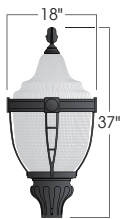
- BLK** - Satin Black
- CLB** - Classic Bronze
- GBZ** - Gloss Textured Bronze
- GRN** - Green
- GTB** - Gloss Textured Black
- TBK** - Textured Black
- TGR** - Gloss Textured Green

D730ARP  
HID



PROJECT:

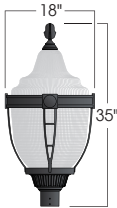
TYPE:



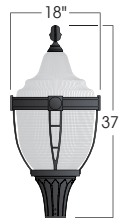
D731ARP  
EPA: 2.02



D734ARP  
EPA: 2.15



D735ARP  
EPA: 1.92



D736ARP  
EPA: 1.97



With SLL



With SLL-FDR (T5 only)



# D730ARP HID SERIES LUMINAIRE

D730ARP  
HID

## Ordering Information

1

2

3

4

5

6

7

Add additional accessories as needed.

### 1 Model

**D731ARP**  
**D734ARP**  
**D735ARP**  
**D734ARP**

### 2 Diffuser Material

**AC** - Acrylic  
**PC** - Polycarbonate

### 3 Light Distribution

**T3** - Type III  
**T5** - Type V

### 4 Light Source

**70MH** - 70W Metal Halide  
**100MH** - 100W Metal Halide  
**150MH** - 150W Metal Halide  
**70HPS** - 70W High Pressure Sodium  
**100HPS** - 100W High Pressure Sodium  
**150HPS** - 150W High Pressure Sodium  
**MDO** - Medium Socket Only  
**MGO** - Mogul Socket Only

### 5 Voltage

**120V**  
**208V**  
**240V**  
**277V**

### 6 Finish

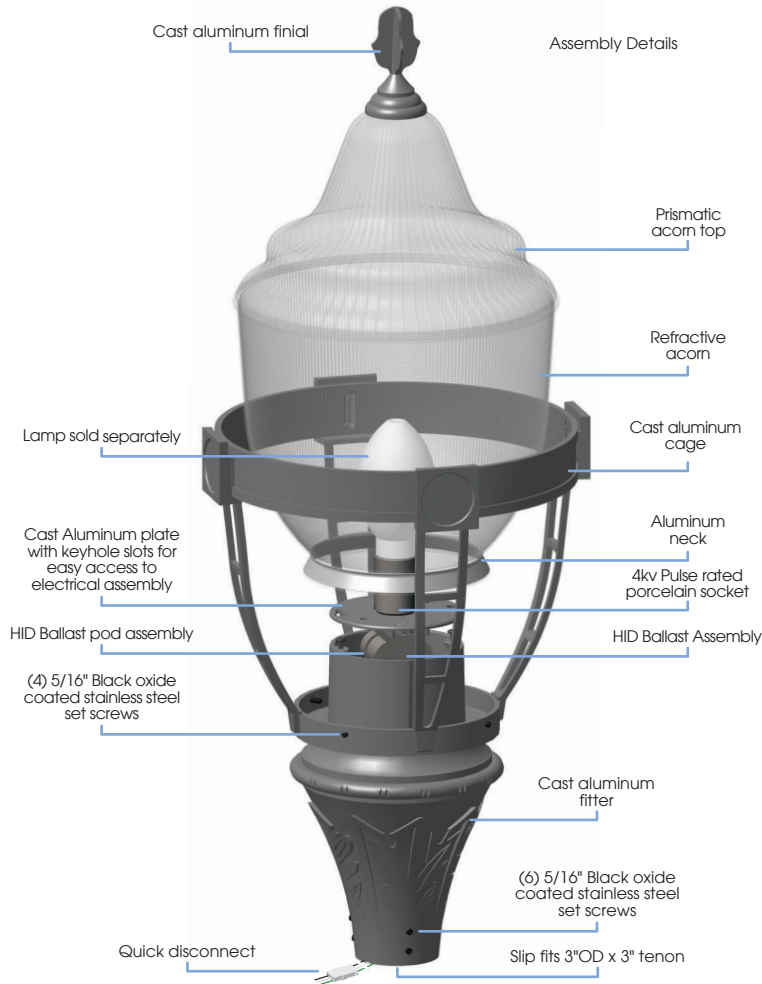
**BLK** - Satin Black  
**CLB** - Classic Bronze  
**GBZ** - Gloss Textured Bronze  
**GRN** - Green  
**GTB** - Gloss Textured Black  
**TBK** - Textured Black  
**TGR** - Gloss Textured Green  
**CSTM** - Custom

### 7 Accessories

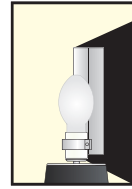
**HSS-90** - 90° House Side Shield  
**HSS-180** - 180° House Side Shield  
**SLL-FDR** - Solid Light Lid-Faceted Downlight Reflector  
**PCL** - dusk-to-dawn button type Photocell

# D730ARP HID SERIES LUMINAIRE

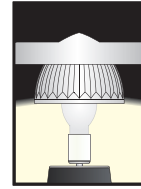
D730ARP  
HID



## Options



**HSS**  
House Side Shield for use with Optical Systems

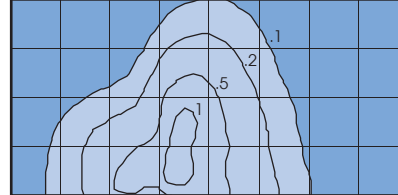


**SLL-FDR**  
Solid Light Lid-Faceted Downlight Reflector

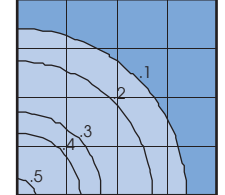
## Standard Photometry

Typical HID light source  
14,000 Lumen  
12' Mounting Height  
Grid Spacing is 12'

Type III (T3)



Type V (T5)



## Socket Types

Wattage	Socket Type
70MH, 100MH, 150MH	Medium
50HPS, 70HPS, 100HPS	Medium
150HPS	Mogul