

DU770 SERIES UTILITY LUMINAIRE

U.6.10.16

DU770
HID UTILITY

DESCRIPTION:

The DU770 Series consists of a cast aluminum fitter and cage assembly surrounding a clear or white textured lens and a spun aluminum top. An optional Type III (L3) or Type V (L5) internal glass refractor is also available.

INSTALLATION:

The luminaire will mount to a 3" OD post or tenon with 5/16" black oxide coated stainless steel set screws to ensure a solid connection. The diffuser will be held to the fitter by (4) 1/4-20" black oxide coated stainless steel captive set screws.

ELECTRICAL:

- High power factor ballast (HPF), core and coil type, pre-wired and tested
- Easy ballast pod access
- 4KV pulse rated porcelain socket
- Suitable for wet location

ETL listed, suitable for wet locations.

DIFFUSER CHOICES:

- Clear Textured Polycarbonate (**PC-CL**)
- White Textured Polycarbonate (**PC-WH**)
- Clear Textured DR Acrylic (**DR-CL**)

ACCESSORIES:

- 90 degree house-side shield (**HSS-90**)
- 180 degree house-side shield (**HSS-180**)
- Twist-lock photocell (**PCL-TW**)

FINISH:

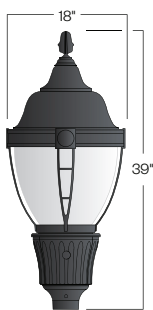
Durable thermoset polyester powdercoat finish in the following:

- Satin Black (**BLK**)
- Classic Bronze (**CLB**)
- Gloss Textured Bronze (**GBZ**)
- Green (**GRN**)
- Gloss Textured Black (**GTB**)
- Textured Black (**TBK**)
- Gloss Textured Green (**TGR**)

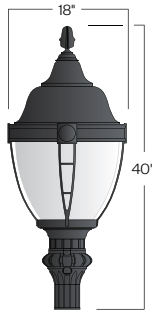


PROJECT:

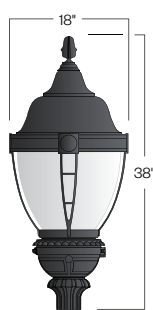
TYPE:



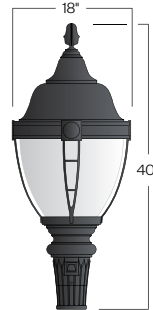
DU770-F1



DU770-F4



DU770-F34



DU770-F37

Ordering Information:

| Model | Diffuser Material-Color | Optical Option | Light Source | Voltage | Finish | Accessories |
|--|-------------------------|-----------------|---|------------------------------|---|-----------------------------|
| DU770-F1 DU770-F4 DU770-F34 DU770-F37 | PC-CL PC-WH DR-CL | L3 L5 FDR | 70MH 100MH 150MH 70HPS 100HPS 150HPS | 120v 208v 240v 277v | BLK CLB GBZ GRN GTB TBK TGR Custom | HSS-90 HSS-180 PCL-TW |

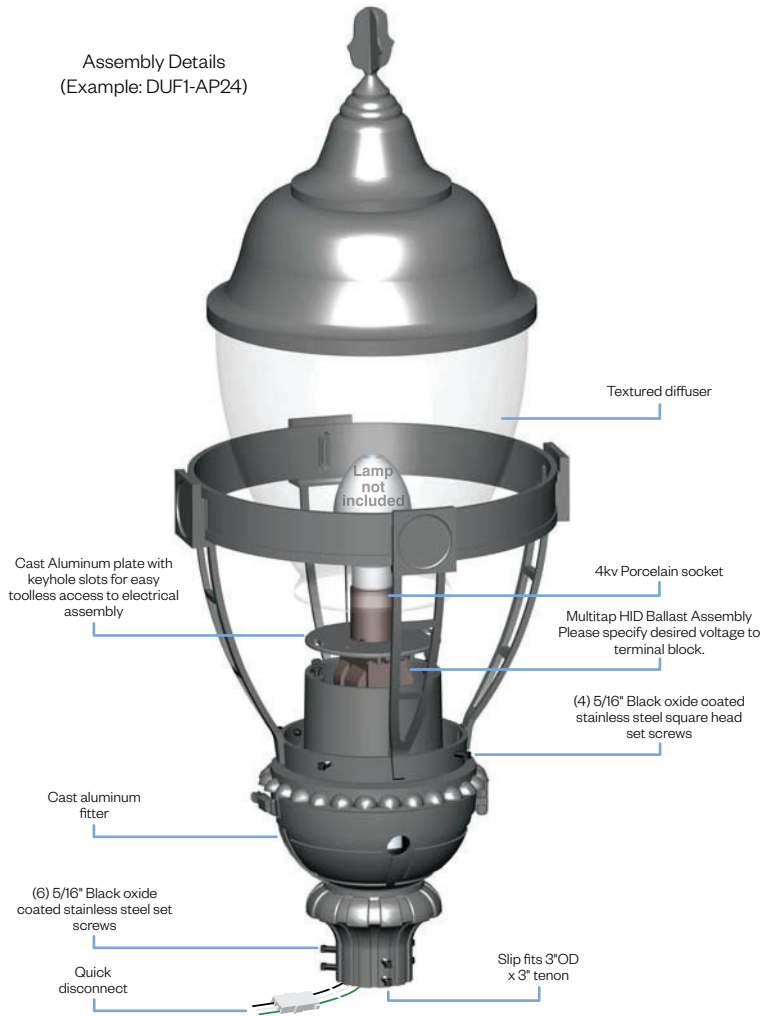
See next page for more complete ordering options



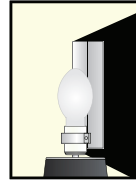
Part String

Example DU770-F1PC-CL/100MH/120v/BLK

Assembly Details
(Example: DUF1-AP24)



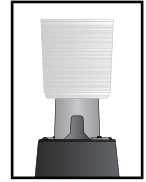
Options



HSS90 & HSS180
House Side
Shield for use
with Optical
Systems

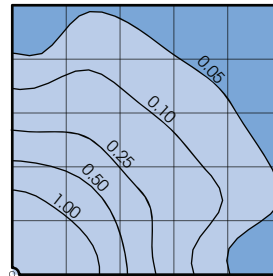


FDR
Faceted
Downlight
Reflector



L3 or L5
Type III or
Type V
Glass Refractor

Photometry



D770 Assembly
175MH lamp
14,000 Lumen
12' Mounting Height
Grid Spacing is 12'

Socket Types

| Wattage | Socket Type |
|------------------|-------------|
| 70MH,100MH,150MH | Medium |
| 70HPS,100HPS | Medium |
| 150HPS | Mogul |