

CONCEALED MODULAR TROUGH

Use with Hornet HP & Cylindrix III Mini Light Modules

CMT4-HSG

APPLICATIONS:

Retail, commercial and hospitality accent and display lighting

CONSTRUCTION:

Extruded aluminum ceiling trim with grooved spackle surface
Die-formed, cold-rolled steel housing, end plates and internal components
3 wire 12ga wiring harness with quick connect plugs for easy module attachment

MODULES:

Accepts a variety of CMT4-LM lighting modules, see applicable specification sheets for lighting options

ELECTRICAL:

Harness is configured for 1 circuit standard
2 circuit harness available
0-10V and Lutron Hi-lume® dimming available

MOUNTING:

For use in sheet rock ceilings

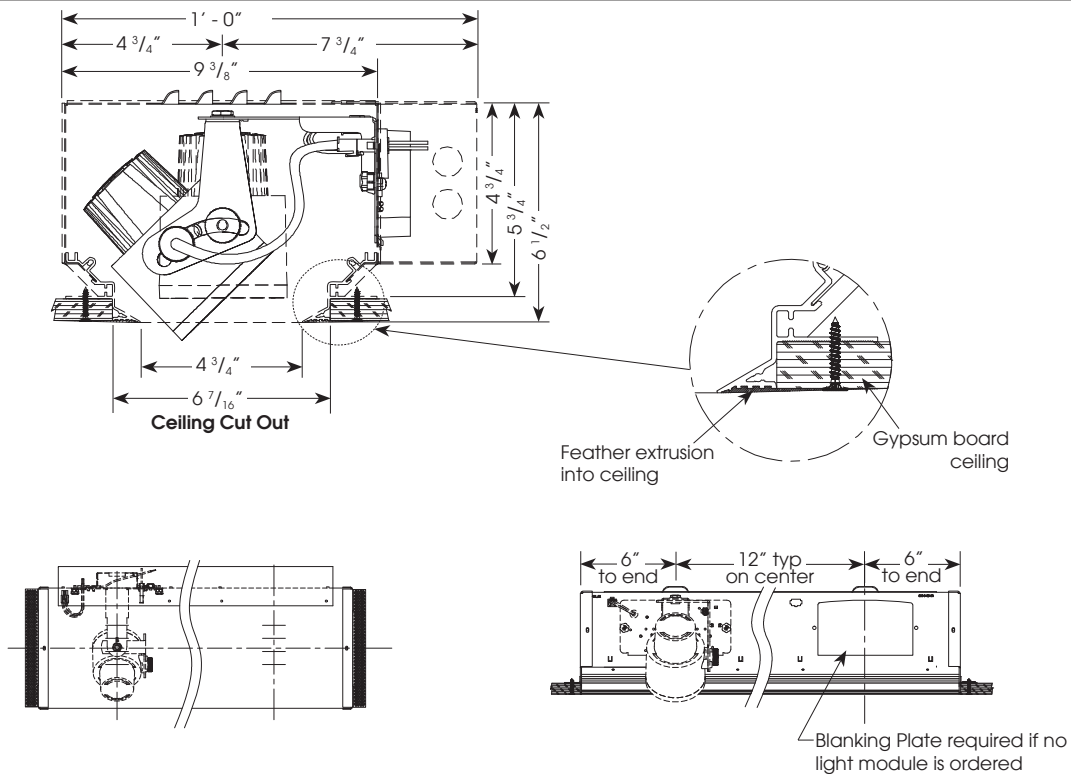
LABELING:



Damp location

PROJECT:

TYPE:



ORDERING INFORMATION:

Housing Model	Module Spacing	Internal Finish	Length	Options	Component Part (ordered separately) Blanking Plate
CMT4-HSG	12	BT - black texture	— - specify length in 1' increments	2CIR - 2 circuit harness 0-10V* - 0-10V dimming HILUME* - Lutron Hi-lume® dimming CP - Chicago plenum	BP - blanking plate, black (whole length must have 1 light module or blanking plate per foot)

Example: CMT4-HSG-12-BT-6
Example: BP

Notes:
1. Order CMT4 light module separately.
See CMT4-XX-LM specification sheets for details.
*2. Dimming options used with LED modules only.

Cat #:

Amerlux reserves the right to change details that do not affect overall function and performance.