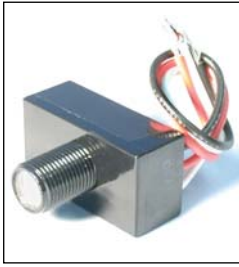
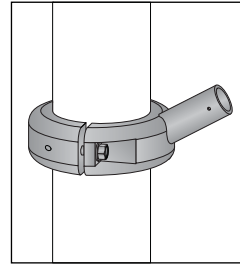


POLE ACCESSORIES

U2.6.19



PCL (120v only)
PCL-MULTI (208v thru 277v)
 Dusk to dawn button type photocell for automatic switching of luminaires. Black polycarbonate housing. See Accessory orientation guide to specify location.

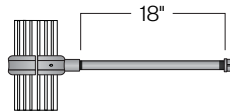


FPH-4 or **FPH-5**
 Extruded aluminum holder for 1" OD flag poles. The flag pole holder is set at 45° angle and welded to a field rotatable and height adjustable collar. Available for 4" OD and 5" OD non-tapered pole.

Banner Arms



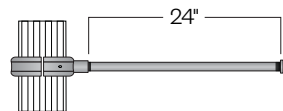
2BA24-FRC4-180



BA18-FRC4



2BA24-FRC5-180



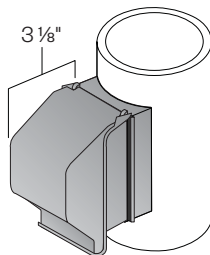
BA24-FRC5

Single or double sided field rotatable banner arms.
BA18 (18") or **BA24** (24") banner arms
FRC4 (4"OD shaft) or **FRC5** (5"OD shaft)
 Add a (2) for a double arm.
 Example: **2BA18-FRC4**

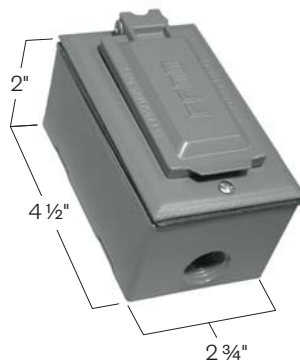
Finish on all arms will match posts

GFCI

The 20 amp, 125 volt, ground fault circuit interrupter duplex receptacles are mounted to the top or bottom of the pole. The receptacles shall have a cast aluminum UL listed cover. The GFCI has a cover that is suitable for wet locations while in use. The receptacle and cover shall mount to an outlet opening, in the post shaft or base, with a gasket and stainless steel screws. Finish will match pole.



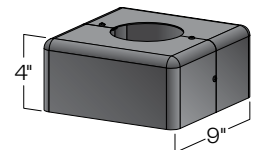
GFCI-TOP
 or
GFCI-BTM



Two Piece Cover

Fabricated from stamped and formed aluminum.

4-COV



5-COV

