

Passo RT

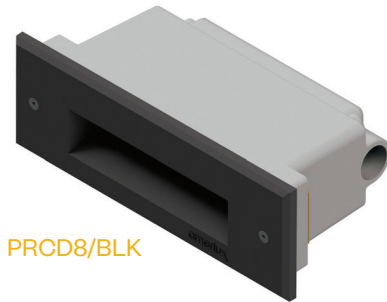
8" Directional LED Steplight

Features

The Passo family of luminaires includes high quality, architecturally relevant fixtures suitable for use in both outdoor or indoor applications. All members of the Passo family feature an independently sealed optical chamber and fully potted driver. These features are especially beneficial in exterior applications as they help compensate for the challenges in getting a good seal between a pre-installed back box and the faceplate as well as those challenges in fully sealing the conduit system. Each luminaire is available in a choice of two output levels to help tailor the desired illuminance to the project and a standard 0-10v dimmable driver allows even further flexibility.

Product Overview

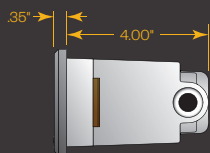
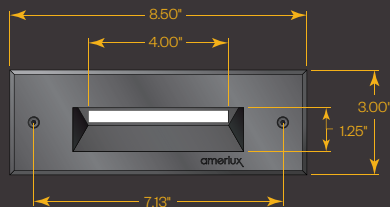
Wattage:	Up to 6W
Lumen Output:	Up to 278 lm
Color Temp:	2,700K / 3,000K / 4,000K / AMBER
Dimming:	0-10v down to 10%



PRCD8/BLK

PROJECT:

TYPE:



Profile

Application:

Designed for new construction in brick, poured concrete, and hollow walls.

Construction:

- Electrical grade PVC housing
- Internal optical chamber
- Cast aluminum faceplate
- 1/8" Tempered frosted Solite lens

Driver:

- Drive Current (100, 175 or 350mA)
- 2.5kv surge protection
- Fully potted
- Input voltage 120v-277v auto-sensing
- 0-10v dimmable down to 10%

ETL listed, suitable for wet locations.

Optics:

Individually sealed optical chamber with neoprene gasket insures LEDs are secure independent of the installation of the back box.

Amber option:

- PRCD8-AL: 150mW
- PRCD8-AH: 383.3mW

Finish:

Premium quality thermoset polyester powdercoated faceplate for a durable finish.

- | | |
|------------------------------|--------------------------|
| ANT - Anthracite Gray | BLK - Satin Black |
| CLB - Classic Bronze | SLV - Silver |
| WHT - White | CSTM - Custom |



Passo RT

8" Directional LED Steplight



PROJECT:

TYPE:

Luminaire Ordering Information



1 Model
PRCD8

2 Performance Code
L27 - 2,700K / 100mA
L30 - 3,000K / 100mA
L40 - 4,000K / 100mA
H27 - 2,700K / 175mA
H30 - 3,000K / 175mA
H40 - 4,000K / 175mA
VH27 - 2,700K / 350mA
VH30 - 3,000K / 350mA
VH40 - 4,000K / 350mA
AL - Amber Low
AH - Amber High

3 Finish
ANT - Anthracite Gray
BLK - Satin Black
CLB - Classic Bronze
SLV - Silver
WHT - White
CSTM - Custom

Back Box Ordering Information (Back Box must be ordered separately for a complete unit)

Model
RTBX-8

The backbox can be shipped ahead of the steplight upon request.

Passo RT

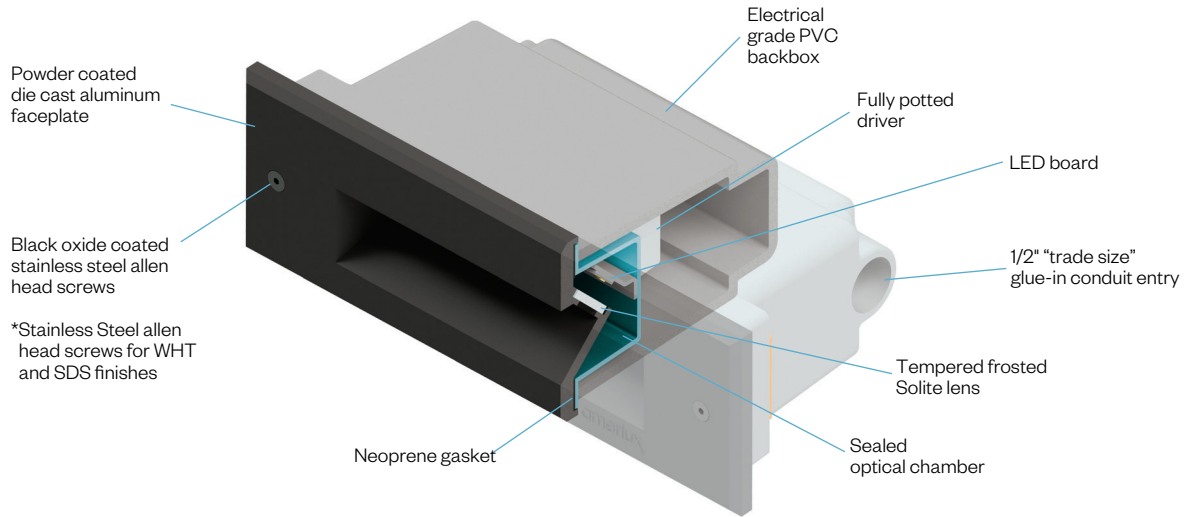
8" Directional LED Steplight



PROJECT:

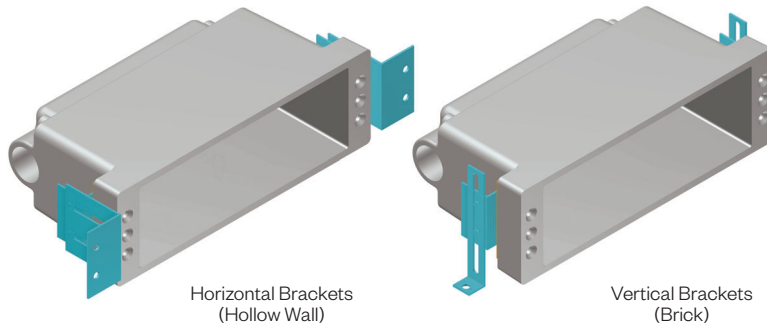
TYPE:

Construction Detail



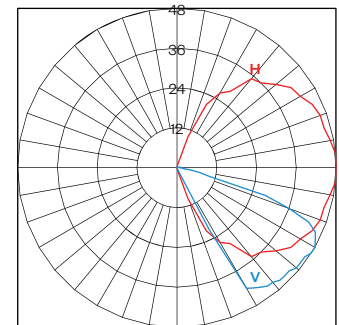
Application Brackets:

(Included with order)



Performance Detail

PSCD8 POLAR GRAPH



Performance Chart

Performance Code	CCT	Approx. Lumens	Drive Current	Nominal Input Power
L27	2700 K	66	100mA	2W
L30	3000 K	70		
L40	4000 K	75		
H27	2700 K	120	175mA	3W
H30	3000 K	126		
H40	4000 K	157		
VH27	2700 K	212	350mA	6W
VH30	3000 K	223		
VH40	4000 K	278		

Amber Option

Model Code	Output
PRCD8-AL	150 mW
PRCD8-AH	383 mW