

# Passo

## 8" LED STEPLIGHT (New Construction)

### Features

Thoughtful design and attention to detail ensure the Passo LED Step Lights are truly one of a kind. Whether for new construction or retrofit applications, the Passo integrates LED technology and well proven construction techniques to deliver an extremely long lasting and virtually maintenance free light that enhances the safety and aesthetics of a project.



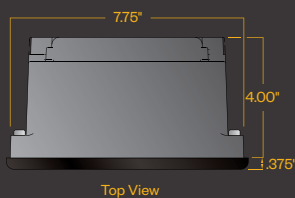
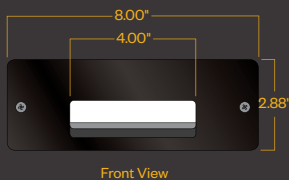
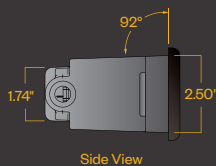
PSLT8/BK

### Product Overview

|               |                          |
|---------------|--------------------------|
| Wattage:      | 4W                       |
| Lumen Output: | 205 lm                   |
| Color Temp:   | 3,000K / 3,500K / 4,000K |

### PROJECT:

### TYPE:



### Application:

Designed for new construction in steps and wall-mounted applications.

### Construction:

Stainless steel driver enclosure and bracketing. Machined brass internal endcaps for optical chamber. Anodized aluminum heatsink. Composite or stainless steel faceplate.

### Driver:

Fully epoxy encapsulated for exceptionally cool operation and greatly extended life. Electronic constant voltage operation with over voltage and short circuit protection. 120 to 277v input. ELV dimmable at 120v only.

### ETL listed, suitable for wet locations.

### Optics:

LED module comprised of a closely packed array of small, discrete LED's that creates a uniform linear light source. Module and heat sink are enclosed in a cylindrical glass lens sealed with O-rings, to provide exceptional performance. Polished reflector directs the light outward uniformly.

### Composite Colors:

- BG - Beige
- BK - Black
- GY - Dark Grey
- WH - White

# Passo

8" LED STEPLIGHT (New Construction)



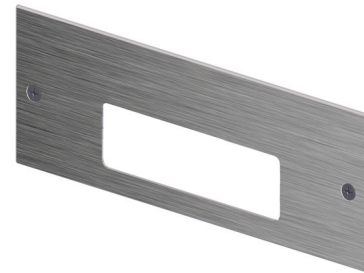
PROJECT:

TYPE:

## Available Faceplates

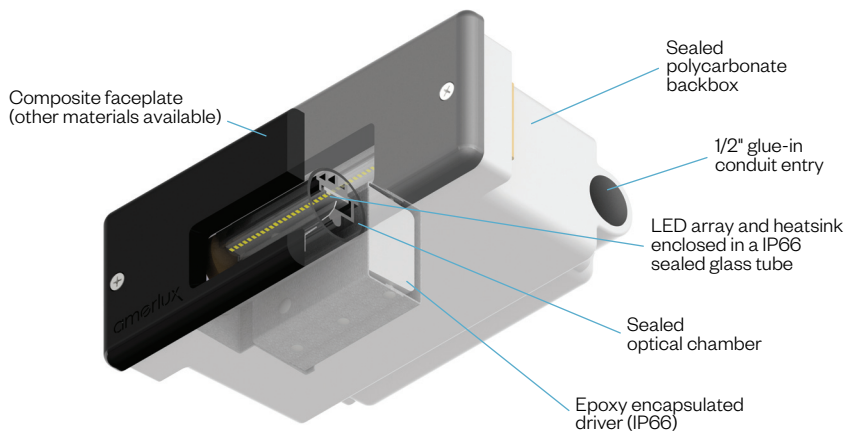


Solid Color Composite  
(Standard)

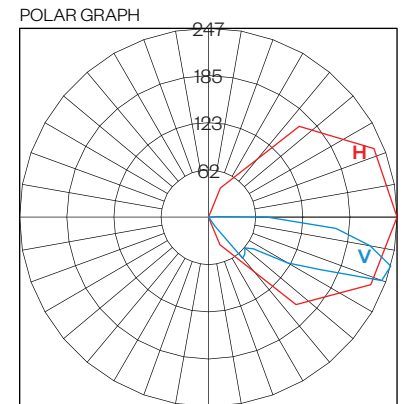


Stainless Steel (SS)  
1/8" thick  
304 Grade

## Construction Detail



## Performance Detail



## Ordering Information

| Model           | Faceplate Color  | Ordering Code | CCT    | Approx. Lumens | Total Efficacy | Nominal Input Power |
|-----------------|--|---------------|--------|----------------|----------------|---------------------|
| <b>PSLT8</b>    | <b>BG</b> - Beige<br><b>BK</b> - Black<br><b>GY</b> - Dark Gray<br><b>WH</b> - White | <b>F30</b>    | 3000 K | 172            | 43 Lm/W        | 4W                  |
|                 |  | <b>F35</b>    | 3500 K | 176            | 44 Lm/W        |                     |
|                 |  | <b>F40</b>    | 4000 K | 205            | 51 Lm/W        |                     |
| <b>PSLT8-SS</b> | Brushed Stainless Steel  |               |        |                |                |                     |

Ordering options shown as **BOLD**