

Passo

Family of Products



The Passo family of luminaires includes high quality, architecturally relevant fixtures in rectangular, square or round form factors. Suitable for use in both outdoor or indoor applications, all members of the Passo family feature an independently sealed optical chamber and fully potted driver. These features are especially beneficial in exterior applications as they help compensate for the challenges in getting a good seal between a pre-installed back box and the faceplate as well as those challenges in fully sealing the conduit system. Each luminaire is available in a choice of three output levels to help tailor the desired illuminance to the project and a standard 0-10V dimmable driver allows even further flexibility. A wide variety of faceplate styles, materials and finishes make the Passo family a great choice for any project.



For composite retrofit models (PSLT), go to www.amerlux.com

Passo RT

Cast Aluminum

Available in amber



FWC Approved

NOTE: Flush mount option available on Passo RT



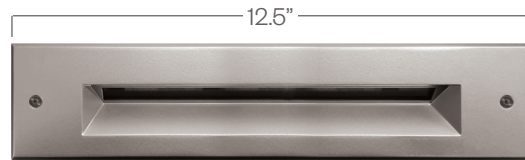
PRCD8



PRCL8



PRCS8



PRCD12

(Directional)



PRCL12

(Louvered)



PRCS12

(Soft Glow)

Passo CR

Stainless Steel

Cast Aluminum



PCSG4



PCSS4



PCCS4



PCCL4

(Louvered)



PCSG6

(Soft Glow with Guard)



PCSS6

(Soft Glow)

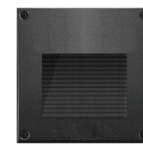


PCCS6

(Soft Glow)

Passo SQ

Cast Aluminum



PSCD4



PSCD6

(Directional)

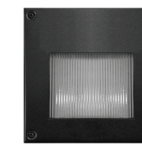


PSCS4

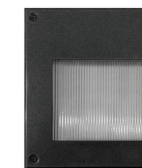


PSCS6

(Soft Glow)



PSCP4



PSCP6

(Prismatic)



PSCL4

(Louvered)

Construction Details

